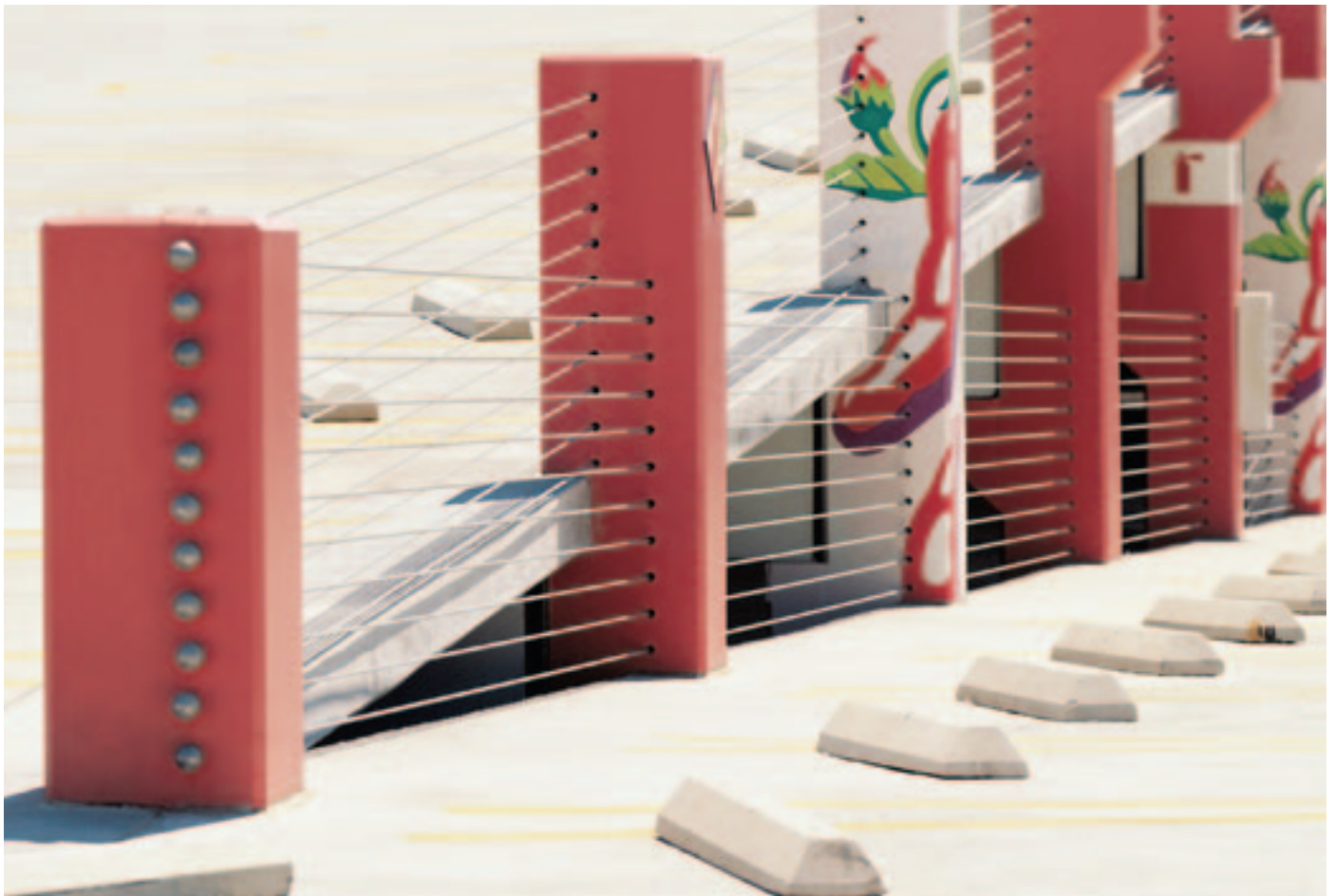


DYWIDAG Barrier Cable System



Glendale Galleria Parking Structure, Glendale, California

COMPONENTS AND STRAND PROPERTIES



Monostrand Anchorage and Pocket Former

Barrier Cable System Components

- ▶ Monostrand Anchorage and Pocket Former
- ▶ Barrel & Wedge
- ▶ Adjustable Anchor (GRAB-IT™)



(A) Barrel and Wedge Anchor

(B) With End Cap



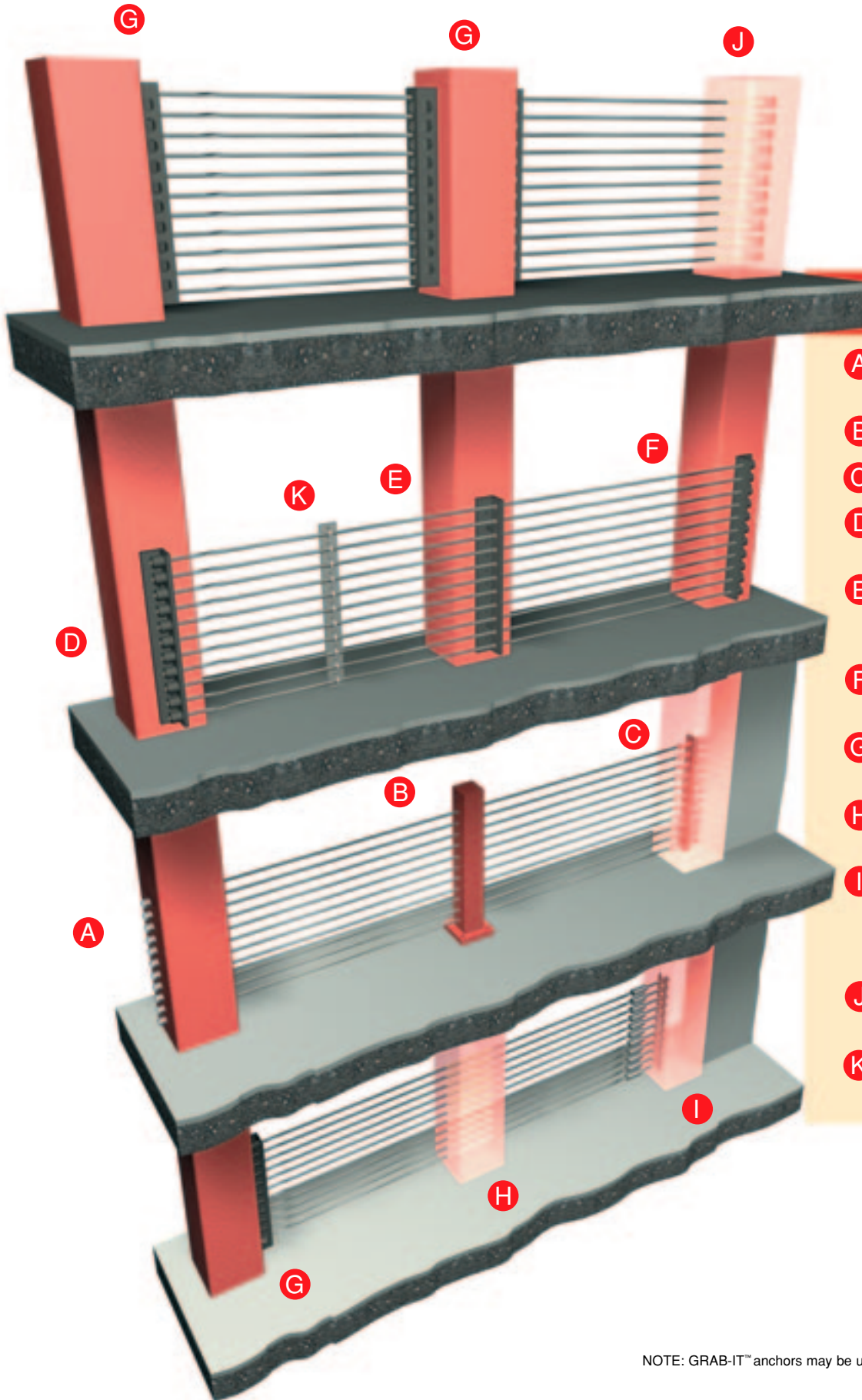
Adjustable Anchor GRAB-IT™

Mechanical Properties of Strand for Barrier Cable

STEEL GRADE	NOMINAL DIAMETER		ULTIMATE STRENGTH		ULTIMATE ELONGATION	NOMINAL AREA		NOMINAL WEIGHT	
	in	mm	lbs	kN		sq. in	sq mm	# per 1000 ft	kg/1000m
250/1725	3/8	9.53	20.0	89	3.5	0.085	54.84	309	460
270/1860*	1/2	12.7	41.3	183.7	3.5	0.153	98.71	520	774
250/1725	1/2	12.7	38.2	169.9	3.5	0.153	98.71	544	810
230/1585	1/2	12.7	33.1	147.2	3.5	0.144	92.90	508	756
195/1345	1/2	12.7	29.0	129.0	3.5	0.150	96.52	516	770

*Non galvanized – all other steel grades are galvanized

DYWIDAG BARRIER CABLE SYSTEM

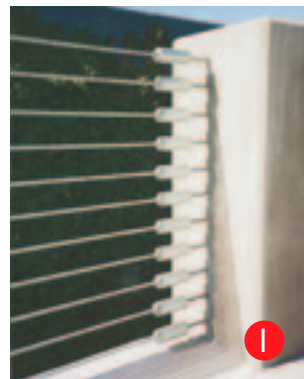
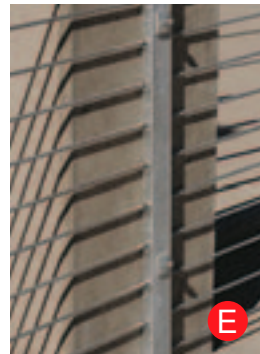
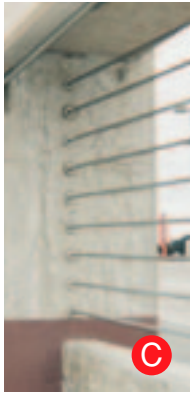


Key

- A** Barrel Anchors with End Caps
- B** Intermediate Tube
- C** Embedded Anchors
- D** End Angle with Barrel Anchors and End Caps
- E** Intermediate Angle (illustration) or Channel (photo E)
- F** End Angle with Angle Caps
- G** End Tube with Barrel Anchors
- H** Embedded Intermediate Sleeve
- I** Detail with Monostrand Anchorages for Inaccessible End Conditions
- J** Monostrand Anchorage and Pocket Former
- K** Intermediate Spreader Plate with U-Bolt

NOTE: GRAB-IT™ anchors may be used as alternate anchorage at end conditions

APPLICATIONS



DYWIDAG Barrier Cable System

Prestressed strands are an increasingly popular option in the selection of vehicular and pedestrian barrier systems. The DYWIDAG Barrier Cable system has two particular advantages over other systems available on the market: it is economic in its high strength to weight ratio; and it resists impact in tension, which is more efficient than the bending mode of other systems.

DSI can provide complete service including:

- ▶ SELECTION OF CORROSION PROTECTION
- ▶ DESIGN AND DETAILING OF ANCHORAGES
- ▶ SUPPLY AND INSTALLATION OF COMPLETE BARRIER SYSTEM

Code Compliance

Building codes provide very few guidelines for the design and installation of barrier cable systems. The PTI Specification For Seven Wire Steel Strand Barrier Cable Applications has adopted the criteria given in the Uniform Building Code, which prescribes a specific lateral load resistance at a fixed distance from the floor level for vehicular restraint, as well as minimum cable spacing for pedestrian protection. Additional information on the design of barrier cable systems is available from your local DSI representative.

As well as meeting PTI specifications, the DYWIDAG wedge-anchor system when properly installed exceeds ACI code requirements for guaranteed ultimate capacity of the strand.

Corrosion Protection

DSI can assist in the selection of appropriate corrosion protection measures according to your project location. DSI can supply barrier cable with various protection options:

- ▶ Galvanized coating conforming to ASTM A475
- ▶ Polyethylene coating in various colors
- ▶ Epoxy coating conforming to ASTM A882*

Anchorage components may be protected through hot dip galvanizing (ASTM A153) or zinc plating conforming to ASTM B633.

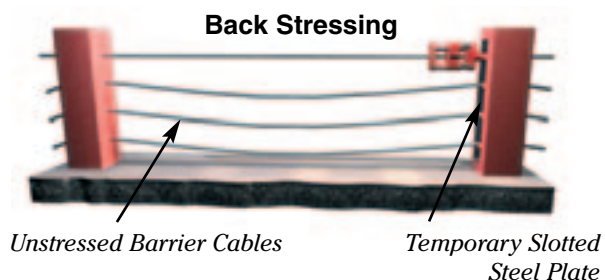
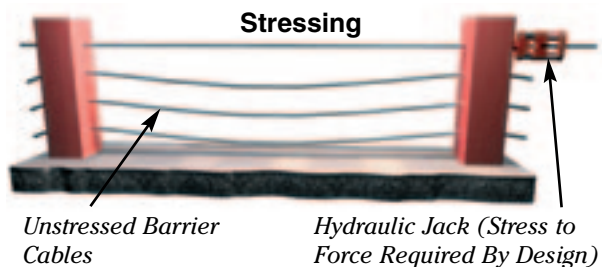
Anchorage Components

The anchorage system selected for the barrier cable is the most critical element in the overall performance and safety of the barrier cable system. DSI offers a wide range of embedded and external connection components to meet a wide variety of architectural and support conditions.

To assure that anchorages develop the required capacity, backstressing is required for every cable anchorage. Though the cables are pretensioned to a relatively small force, anchorages will experience the full cable tension during impact. If the cables are properly installed the connection of the barrier system to the column or shear wall is the connection that will ultimately resist the impact, not the cable anchorages or cables themselves.

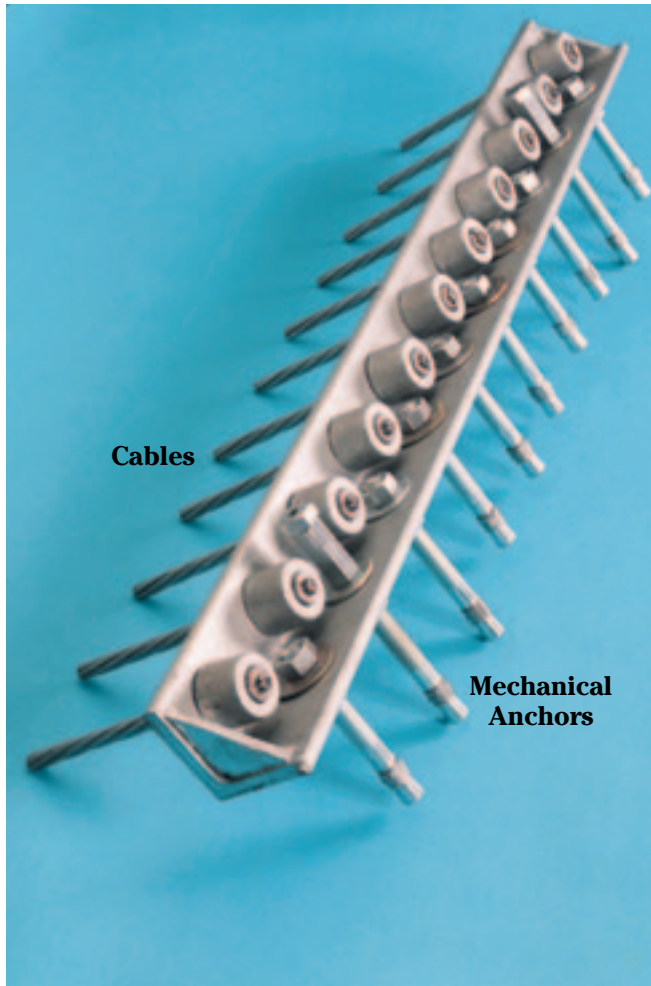
Service and Technical Assistance

DYWIDAG barrier cables are cut to length and shipped together with all required accessories and attachments or shipped on wooden spools for site fabrication. Field technicians are available to assist contractors in placing and stressing DSI supplied barrier cables. DSI also has trained and experienced field crews available to perform a complete system installation in accordance with the project specifications. Installation is quick, especially when performed by DSI experienced crews.



MAKE USE OF DSI EXPERIENCE... CALL DSI QUALITY INSTALLATION

*Cannot be backstressed without damage to coating

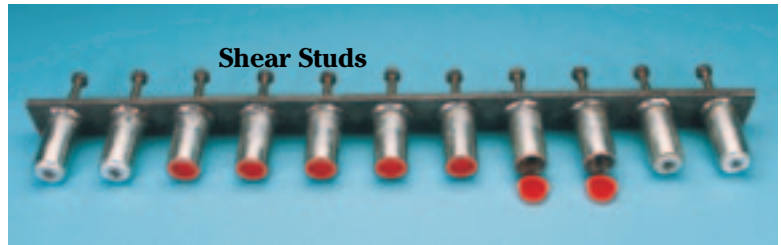


Cables

**Mechanical
Anchors**

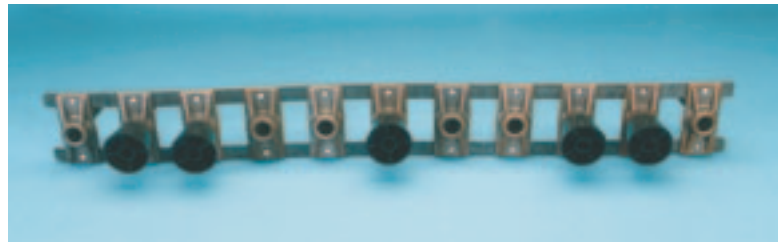
Surface mounted end angle with barrel anchors.

For sales and service contact the DSI office nearest you.



Shear Studs

Shearwall/inaccessible column embedment.



Monostrand anchorages for embedment reserving pocket formers.



Backstressing of barrier cable.

**DYWIDAG-Systems
International USA Inc.**

320 Marmon Drive
Bolingbrook, IL 60440
Phone (630) 739-1100
Fax (630) 739-5517
E-Mail: dsiamerica@dsiamerica.com
www.dsiamerica.com

1263 Newark Road
Toughkenamon, PA 19374
Phone (610) 268-2221
Fax (610) 268-3053
E-Mail: dsiamerica@dsiamerica.com
www.dsiamerica.com

1303 S. Central Ave
Unit I
Kent, WA 98032
Phone (253) 859-9995
Fax (253) 859-9119
E-Mail: dsiamerica@dsiamerica.com
www.dsiamerica.com

2154 South Street
Long Beach, CA 90805
Phone (562) 531-6161
Fax (562) 531-3266
E-Mail: dsiamerica@dsiamerica.com
www.dsiamerica.com

4732 Stone Drive
Tucker, GA 30084
Phone (770) 491-3790
Fax (770) 938-1219
E-Mail: dsiamerica@dsiamerica.com
www.dsiamerica.com

1801 N. Peyco Drive
Arlington, TX 76001-6704
Phone (817) 465-3333
Fax (817) 465-3696
E-Mail: dsiamerica@dsiamerica.com
www.dsiamerica.com

3300 SW 50th Avenue
Davie, FL 33314
Phone (954) 318-1105
Fax (954) 318-1107
E-Mail: dsiamerica@dsiamerica.com
www.dsiamerica.com

19 Ann Road
Long Valley, NJ 07853
Phone (908) 850-3532
Fax (908) 850-8661
E-Mail: dsiamerica@dsiamerica.com
www.dsiamerica.com

Please note:

This brochure serves basic information purposes only. Technical data and information provided herein shall be considered non-binding and may be subject to change without notice. We do not assume any liability for losses or damages attributed to the use of this technical data and any improper use of our products. Should you require further information on particular products, please do not hesitate to contact us.

**DYWIDAG-Systems International Canada Ltd.
Civil Business Unit**

Western Branch
19433 96th Avenue, Suite 103
Surrey, BC V4N 4C4 Canada
Phone (604) 888-8818
Fax (604) 888-5008
E-Mail: wcd@dsiamerica.com
www.dsicanada.ca

Eastern Branch
37 Cardico Drive
Gormley, ON
L0H 1G0 Canada
Phone (905) 888-8988
Fax (905) 888-8987
E-Mail: ecd@dsiamerica.com
www.dsicanada.ca

Calgary Office
2816-21 Street N.E., Suite 204
Calgary, Alberta T2E 6 Z2 Canada
Phone (403) 291-4414
Fax (403) 250-5221
E-Mail: wcd@dsiamerica.com
www.dsicanada.ca

Quebec Office
St. Bruno, Quebec
J3V 6E2 Canada
Phone (450) 653-0935
Fax (450) 653-0977
E-Mail: ecd@dsiamerica.com
www.dsicanada.ca

ARGENTINA
AUSTRALIA
AUSTRIA
BELGIUM
BOSNIA AND HERZEGOVINA
BRAZIL
CANADA
CHILE
CHINA
COLOMBIA
COSTA RICA
CROATIA
CZECH REPUBLIC
DENMARK
EGYPT
ESTONIA
FINLAND
FRANCE
GERMANY
GREECE
GUATEMALA
HONDURAS
HONG KONG
INDONESIA
IRAN
ITALY
JAPAN
KOREA
LEBANON
LUXEMBOURG
MALAYSIA
MEXICO
NETHERLANDS
NORWAY
OMAN
PANAMA
PARAGUAY
PERU
POLAND
PORTUGAL
QATAR
RUSSIA
SAUDI ARABIA
SINGAPORE
SOUTH AFRICA
SPAIN
SWEDEN
SWITZERLAND
TAIWAN
THAILAND
TURKEY
UNITED ARAB EMIRATES
UNITED KINGDOM
URUGUAY
USA
VENEZUELA

www.dsiamerica.com